

DIAL INDICATORS/INCH

Dial Indicators / Group 4 Inch



4802-10

Specifications

Inch-ANSI Standard (Stem Diameter 3/8")

Graduation	Total Range	Order No.	Range Per Rev.	Dial Reading	Accuracy 2-1/3 Rev.	Accuracy Total Range	Features
.0001"	.025"	4802-10	.01"	0-10	±.0001"	±.0002"	
		4803-10	.01"	0-5-0	±.0001"	±.0002"	
	.05"	4818-10	.02"	0-20	±.0003"	±.0003"	
.0005"	.075"	4570	.03"	0-30	±.0005"	±.0005"	
		4571	.03"	0-15-0	±.0005"	±.0005"	
.001"	.25"	4410	.1"	0-100	±.001"	±.001"	
		4411	.1"	0-50-0	±.001"	±.001"	
	3"	4887	.1"	0-100	±.001"	±.005"	

The measuring force for all of the above indicators is 1.5N or less, except for the following: **4887**; 2.5N or less.

The conversion factor between Newton force and gram force is 1N=101.94gf.

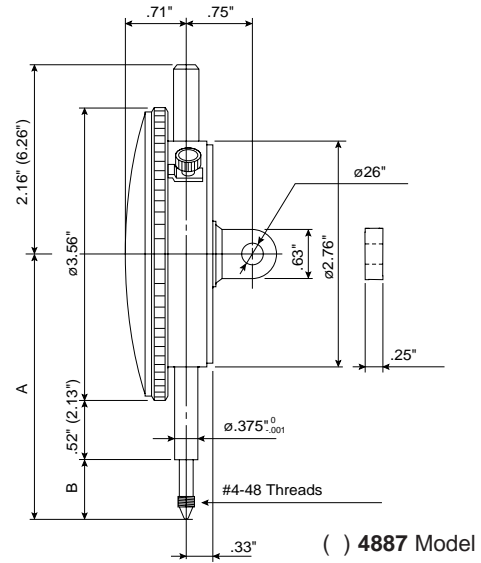
Lug back is standard; for flat-back version add 'B' to the order number, e.g. **4802B-10**

High Precision Type	Reverse Reading	Balanced Dial	Continuous Dial	One Revolution
Damper at Lowest Rest Point	Shockproof	Adjustable Hand	Waterproof	Double Scale Spacing
Coaxial Revolution Counter	Peak Retaining	Long Stem	Dustproof	Jeweled Low Force

Dial Indicators / Group 4 *Inch*

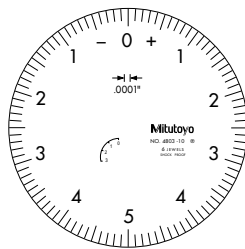
Dimensions

Order No.	A	B
4802-10	2.64"	.34"
4803-10	2.64"	.34"
4818-10	2.66"	.36"
4570	2.66"	.36"
4571	2.66"	.36"
4410	2.87"	.57"
4411	2.87"	.57"
4887	7.24"	3.74"

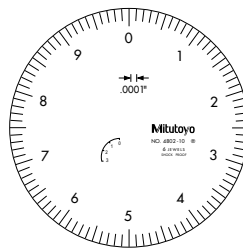


Dial Indicator Faces

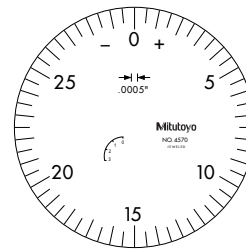
Group 4 – Inch



4803-10



4802-10



4570

Dial Indicators / Group 4 *Metric*



4230-01

Specifications

Metric-ANSI Standard (Stem Diameter 3/8" with yellow dial face)

Graduation	Total Range	Order No.	Range Per Rev.	Dial Reading	Accuracy	Features
0.01mm	2.5mm	4230-01	1mm	0-100	±0.01mm	
		4231-01	1mm	0-50-0	±0.01mm	

Metric-ISO/JIS Standard (Stem Diameter 8mm)

Graduation	Total Range	Order No.	Range Per Rev.	Dial Reading	Accuracy	Features
0.01mm	10mm	4046	1mm	0-100	±0.015mm	

The measuring force of all of the above indicators is 1.5N or less, except for the following: 4046; 1.4N or less.

The conversion factor between Newton force and gram force is 1N=101.94gf.

Lug back is standard; for the flat back version add 'B' to the order number, e.g. 4230B-01.

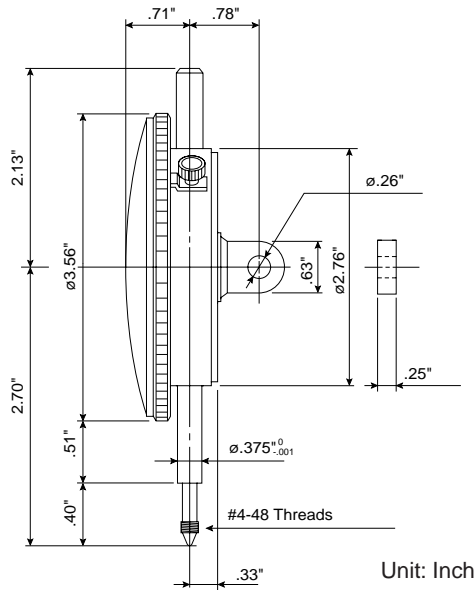
4046 gages accuracy includes uncertainty k=2.

High Precision Type	Reverse Reading	Balanced Dial	Continuous Dial	One Revolution
Damper at Lowest Rest Point	Shockproof	Adjustable Hand	Waterproof	Double Scale Spacing
Coaxial Revolution Counter	Peak Retaining	Long Stem	Dustproof	Jeweled
				Low Force

Dial Indicators / Group 4 *Metric*

Dimensions

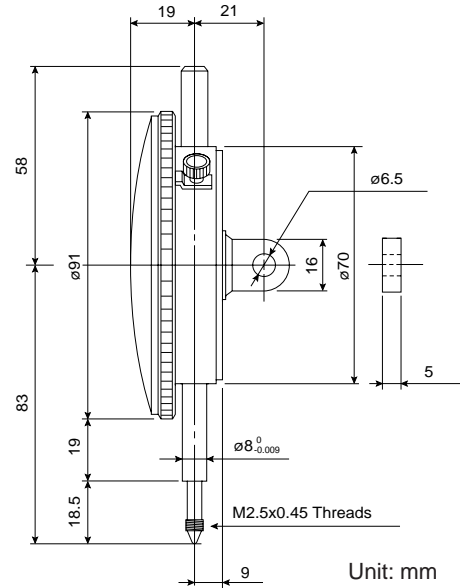
Metric ANSI Standard



4230-1, 4231-01

Dimensions

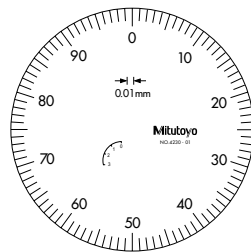
ISO/JIS Metric Standard



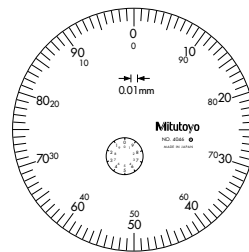
4046

Dial Indicator Faces

Group 4 – Metric



4230-01



4046