

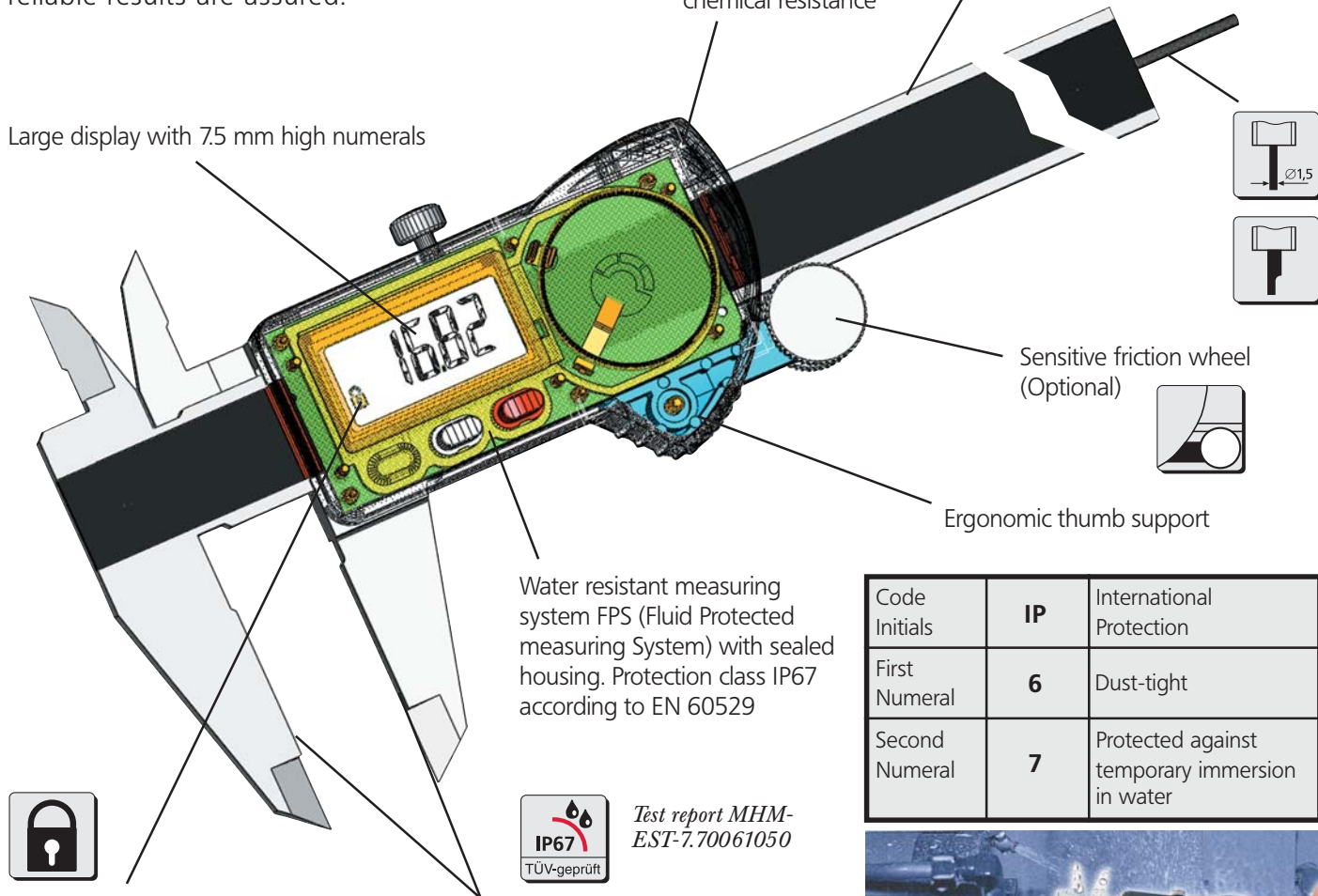
MarCal Calipers

▶ | The water proof digital caliper **MarCal 16 EW**, is now available with the protection class IP67. Even in the most difficult workshop conditions, precise and reliable results are assured.

Both the housing and operating buttons are made from Ultradur®, which has an excellent chemical resistance

Lapped guide ways allow smooth and even movement

Large display with 7.5 mm high numerals



Reference Lock Function

Lapped measuring faces for accurate measurement

Code Initials	IP	International Protection
First Numeral	6	Dust-tight
Second Numeral	7	Protected against temporary immersion in water

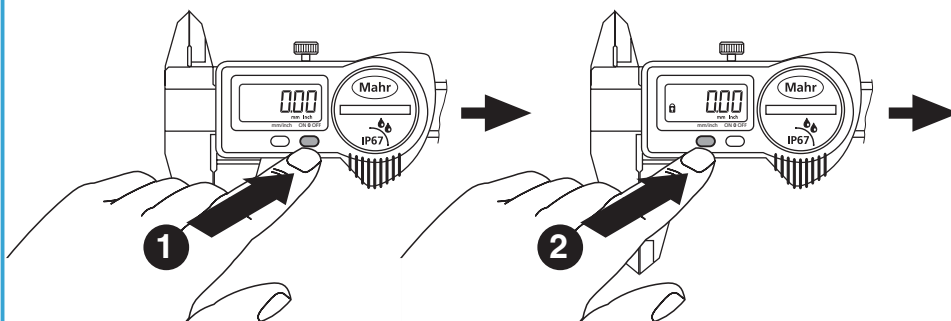
Test report MHM-EST-7.70061050



Reference Lock Function

1. First set to zero

2. Lock-Function is activated



Advantages of the Reference Lock Function

- Zero position is secured
- Operating error is prevented
- Caliper is always ready for measurement

Digital Caliper 16 EW according to protection class IP67



Features

Functions:
ON/OFF
0 (Zero setting)
mm/inch
Reference Lock
Unlock

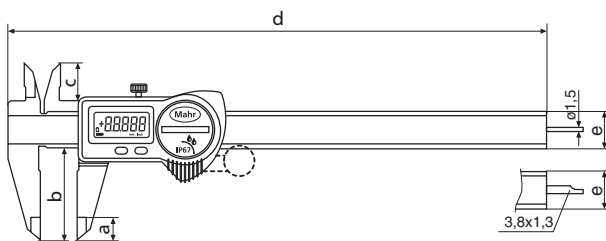
- Inductive waterproof measuring system FPS (Fluid Protected measuring System) with Reference Lock Function
- Dirt wipers are integrated in the slide
- Life of the battery approx. 2 years

- Max measuring speed 1.5 m/sec (60"/sec)
- High contrast Liquid Crystal Display with 7.5 mm high digits
- Lapped guide way
- Slide and beam made of hardened stainless steel

- Measuring blades for inside measurement
- Step measuring function
- Locking screw
- Scope of supply: Case, battery

Technical Data

Measuring range mm (inch)	Resolution mm/inch	Error limit G		Depth rod	Friction wheel	Order no.
		mm/inch	DIN 862			
150 (6")	0.01/ .0005"	0.03/ .0015"	●	●		4102900
150 (6")	0.01/ .0005"	0.03/ .0015"	●	●	●	4102901
150 (6")	0.01/ .0005"	0.03/ .0015"	●			4102911
150 (6")	0.01/ .0005"	0.03/ .0015"	●	●	●	4102912
200 (8")	0.01/ .0005"	0.03/ .0015"	●	●	●	4102902
200 (8")	0.01/ .0005"	0.03/ .0015"	●	●	●	4102903
300 (12")	0.01/ .0005"	0.04/ .0016"	●			4102906
300 (12")	0.01/ .0005"	0.04/ .0016"	●		●	4102907



Dimensions

mm/ inch	a	b	c	d	e
150/ 6	10/ .4	40/ 1.6	16/ .6	233/ 9.2	16 x 3/ .6 x .12
200/ 8	10/ .4	40/ 1.6	16/ .6	285/ 11.2	16 x 3/ .6 x .12
300/ 12	14/ .5	64/ 2.5	18/ .7	388/ 15.2	16 x 4/ .6 x .15

Accessories

	Order no.	16 Em
Depth Measuring Bridge	4102020	
Battery 3V, Type CR 2032	4102520	