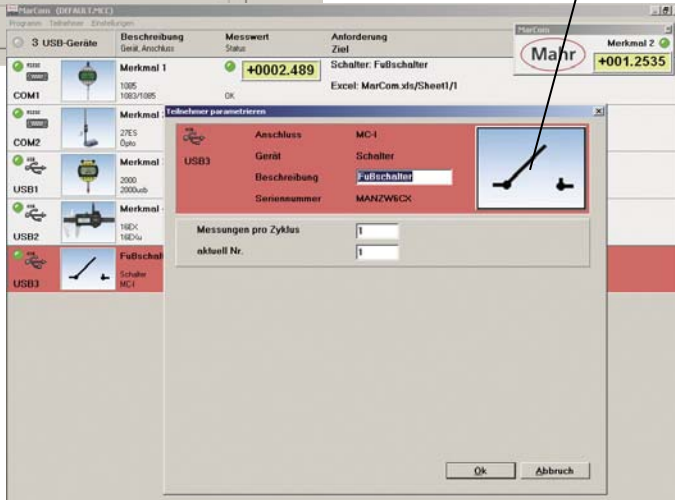
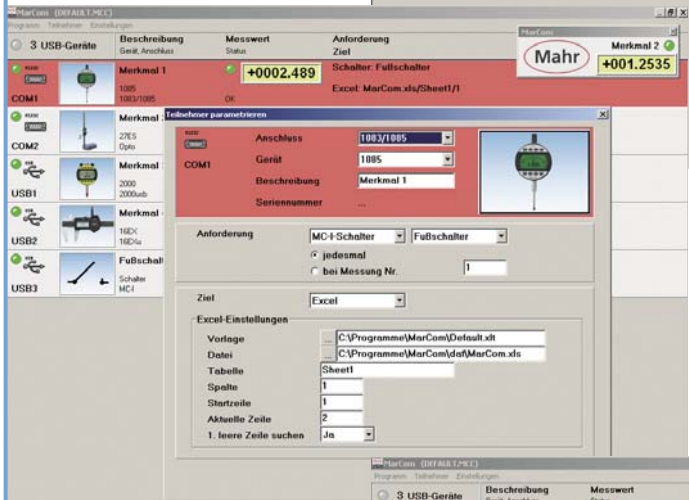
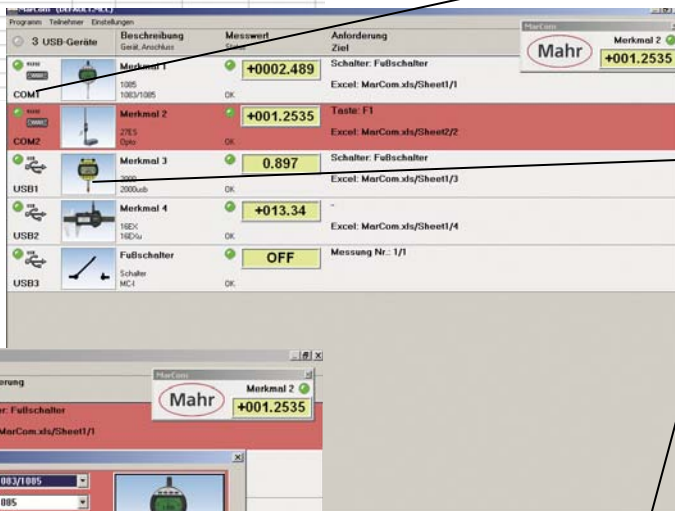


MarConnect Software MarCom

Value	Messstelle 1	Messstelle 2	Messstelle 3
TO	100 070	1,150	43,000
TU	99 992	1,140	42,000
M1	99 995	1,145	42,999
M2	99 999	1,145	43,016
M3	100 011	1,149	44,999
M4	99 995	1,145	44,999
M5	99 995	1,145	44,999
M6	99 996	1,145	44,999
M7	99 995	1,145	43,016
M8	99 998	1,145	
M9	99 998	1,145	
M10	99 998	1,152	
M11	99 998	1,152	
M12	99 995	1,143	
M13	100 009	1,143	
M14	99 995	1,144	
M15	99 996		
M16	99 996		
M17			
M18			
M19			
M20			
M21			
M22			
M23			
M24			
M25			



Software MarCom Professional

- Measured values can be directly transferred into either MS Excel (from version 97) or into a text file
- The measured values from each instrument can be sent to a different column, table or folder in Excel
- Data transmission is possible via USB and 2 serial COM interfaces
- USB hub is also suitable as a measuring instrument interface
- Up to 100 measuring instruments can be connected with USB data cable
- Clear portrayal of the chosen measuring instruments with the aid of icons
- Several foot switches can be connected up via USB. Measuring instruments can be freely assigned
- Freely definable and configurable measurement cycles
- Measured values are flexible and comfortable to transmit, you can either press the „Data“ button on the measuring instrument or on the data cable; via a computer keyboard; or by activating a foot switch connected to a USB interface

System requirements:

- Windows 2000, XP
- USB interface or higher 1.1
- up to 10 MB
- CD / DVD drive
- Recommended: MS Excel from Version 97 onwards

Order no. 4102552

Software MarCom Standard

(USB cable is included in the scope of supply)

Features and system requirements are identical to MarCom Professional, exception is that it only has one USB and one serial COM interface

Order no. 4102551