



**AR-20**

## Rockwell Type Hardness Testing Machine **AR-20**

### STANDARD ACCESSORIES

- Diamond indenter.
- 1/16" dia. steel ball indenter.
- 1/16" dia. spare steel ball (12 pcs.)
- Flat anvil diameter: 2.52" (64mm).
- Hardness test block (30 to 35HRC).
- Hardness test block (60 to 65HRC).
- Hardness test block (90 to 95HRB).
- Level
- Machine cover.
- Power cable.
- User's manual.

### Specifications

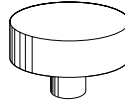
Model	AR-20
Order No.	810-201A
Preliminary test force	98.07N (10kgf)
Test force	588.4N (60kgf), 980.7N (100kgf), 1471N (150kgf)
Table up/down drive	Manual
Load control	Automatic (loading, duration, unloading)
Load duration	3s to 5.5s (can be specified)
Display	Dial
Minimum reading	0.5
Specimen	
Maximum height	5.51" (140mm) on Flat Anvil 5.91" (150mm)* on Round Table
Maximum depth	4.8" (122mm)**
Power supply	120V AC (±10%), 60Hz
Power consumption	30VA
Dimensions (W x D x H)	8.27 x 19.13 x 26.77" (210 x 486 x 680mm)
Mass	88 lbs. (40kg)

\* Minimum height: .39" (10mm) \*\* From center of indenter shaft

### OPTIONAL ACCESSORIES

#### For Rockwell/Rockwell Superficial Type Hardness Testing machine

#### Flat anvil



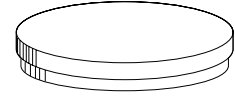
Diameter: 2.5" (64mm)

**810-039-7**

Diameter: 1.5" (38mm)

**810-039-8**

#### Round table



Diameter: 8" (203mm)

**810-037-7**

#### Spot anvils



Diameter: .25" (6.4mm)

Height: .88" (22mm)

**810-044-7**



Diamond-tipped type for Rockwell superficial hardness measurement

**810-030-7**

#### V-anvils



Diameter: 3.5" (89mm)

Groove width: 3.5" (89mm)

**810-040-7**



Diameter: 1.5" (38mm)

Groove width: .38" (9.7mm)

**810-041-7**



Diameter: .38" (9.7mm)

Groove width: .38" (9.7mm)

**810-042-7**

#### Adjustable support

Adjustable height: 13 to 18.5" (330 to 470mm)  
Used to mount a V-anvil.

**810-028-7**

